

# 400 SERIES

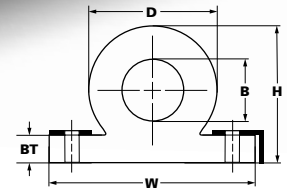
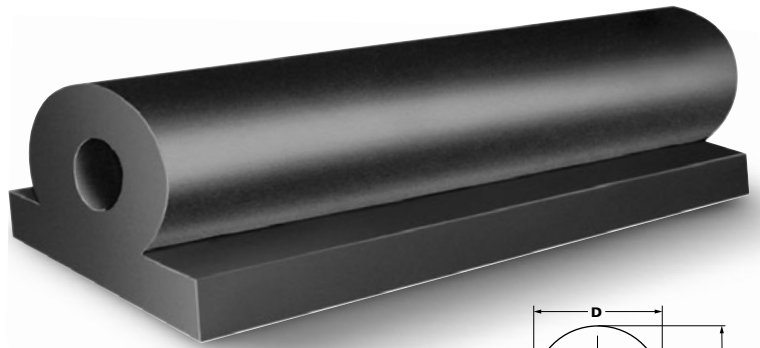
## WING TYPE O-BORE

Designed for easy attachment to vessels and docks.

Drill and bolt fender to structure using the integral wings.

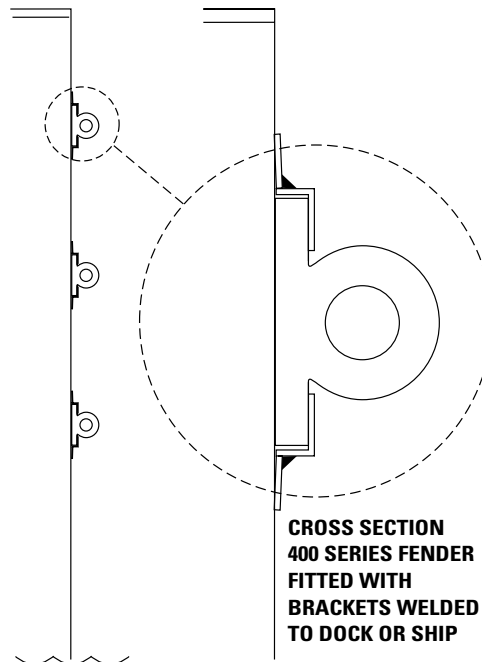
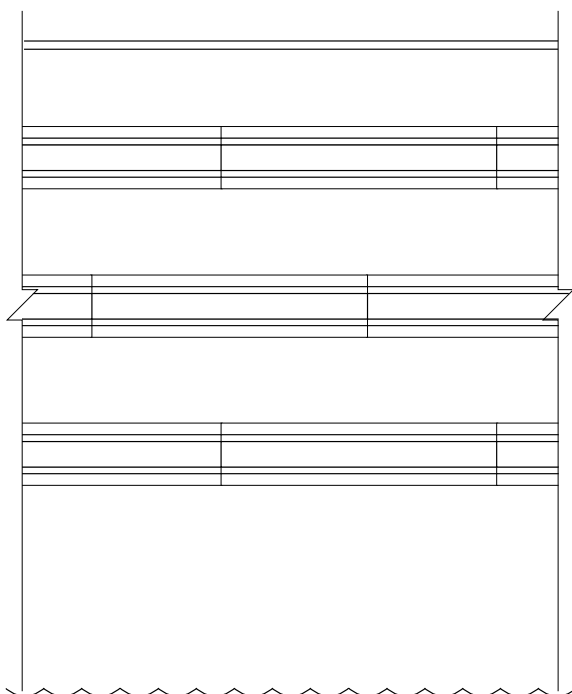
Eliminates need for mounting holes on the facing. Offered in three

EPDM colors: black, non-marking grey and white.

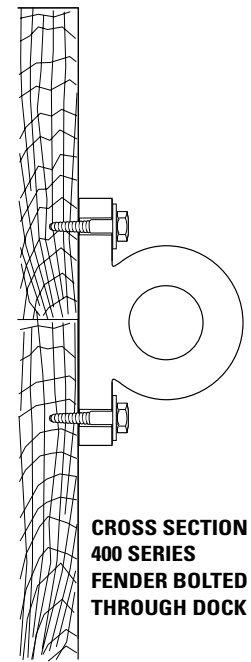


| CODE NO. | DURAMAX® PART NO. | HEIGHT (H) | BASE WIDTH (W) | BASE THICKNESS (BT) | OUTSIDE DIAM. (D) | BORE DIAM. (B) | WT./FT.   | LENGTH UP TO* |
|----------|-------------------|------------|----------------|---------------------|-------------------|----------------|-----------|---------------|
| DB-404   | 802040401         | 2 1/2"     | 4"             | 1/2"                | 2 1/2"            | 1"             | 2.8 LBS.  | 60 FT.        |
| DB-405   | 802040501         | 2 1/2"     | 5"             | 1/2"                | 2 1/2"            | 1"             | 3.1 LBS.  | 60 FT.        |
| DB-406   | 802040601         | 3"         | 6"             | 3/4"                | 3"                | 1"             | 4.9 LBS.  | 60 FT.        |
| DB-407   | 802040701         | 4"         | 6 1/2"         | 1"                  | 4"                | 2"             | 7.1 LBS.  | 60 FT.        |
| DB-408   | 802040801         | 4"         | 6 1/2"         | 1"                  | 4"                | 1"             | 8.3 LBS.  | 20 FT.        |
| DB-409   | 802040901         | 6"         | 9"             | 1 1/2"              | 6"                | 3"             | 15.3 LBS. | 20 FT.        |
| DB-409A  | 802040911         | 6"         | 9"             | 1 1/2"              | 6"                | 2"             | 17.4 LBS. | 20 FT.        |
| DB-410   | 802041001         | 6"         | 9 1/2"         | 1 1/2"              | 6"                | 2"             | 17.7 LBS. | 20 FT.        |
| DB-412   | 802041201         | 8"         | 12"            | 2"                  | 8"                | 4"             | 27.2 LBS. | 20 FT.        |
| DB-416   | 802041601         | 10"        | 16"            | 2 1/2"              | 10"               | 4"             | 47.5 LBS. | 20 FT.        |
| DB-418   | 802041801         | 12"        | 18"            | 3"                  | 12"               | 6"             | 61.2 LBS. | 10 FT.        |

\*Max. length for white and grey are 20 FT.



**CROSS SECTION  
400 SERIES FENDER  
FITTED WITH  
BRACKETS WELDED  
TO DOCK OR SHIP**

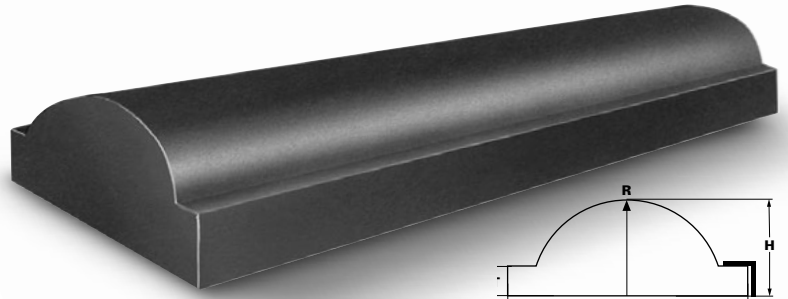


**CROSS SECTION  
400 SERIES  
FENDER BOLTED  
THROUGH DOCK**

# 400 SERIES *(CONTINUED)*

## WING TYPE SOLID

Manufactured in black, non-marking grey and white EPDM

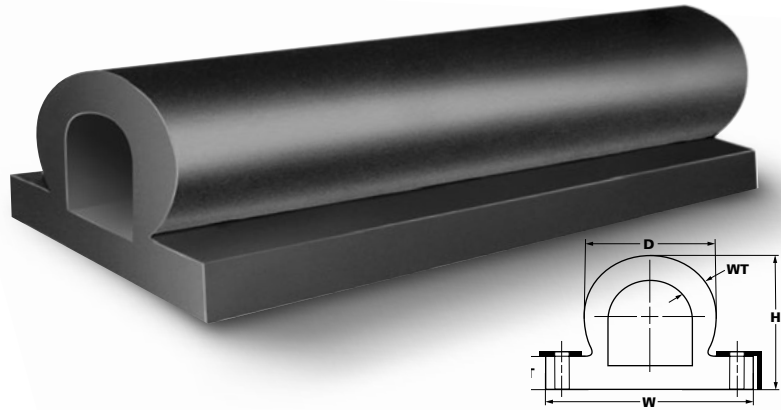


| CODE NO. | DURAMAX® PART NO. | HEIGHT (H) | BASE WIDTH (W) | BASE THICKNESS (BT) | RADIUS (R) | WT./FT.   | LENGTH UP TO |
|----------|-------------------|------------|----------------|---------------------|------------|-----------|--------------|
| DB-460   | 802046001         | 4"         | 10"            | 1 1/4"              | 4"         | 14.6 LBS. | 20 FT.       |

WING TYPE SOLID/D-BORE

## WING TYPE D-BORE

Manufactured in black, non-marking grey and white EPDM



| CODE NO. | DURAMAX® PART NO. | HEIGHT (H) | BASE WIDTH (W) | BASE THICKNESS (BT) | OUTSIDE DIAM. (D) | WALL THICKNESS (WT) | WT./FT.   | LENGTH UP TO |
|----------|-------------------|------------|----------------|---------------------|-------------------|---------------------|-----------|--------------|
| DB-440   | 802044001         | 6"         | 9 1/2"         | 1 1/2"              | 6"                | 1"                  | 14.9 LBS. | 20 FT.       |

